

StyleLex®

Suitable For Weatherproof Exterior Covered Areas

Say hello to your new alfresco kitchen

www.stylelex.net

EGR
DECOR

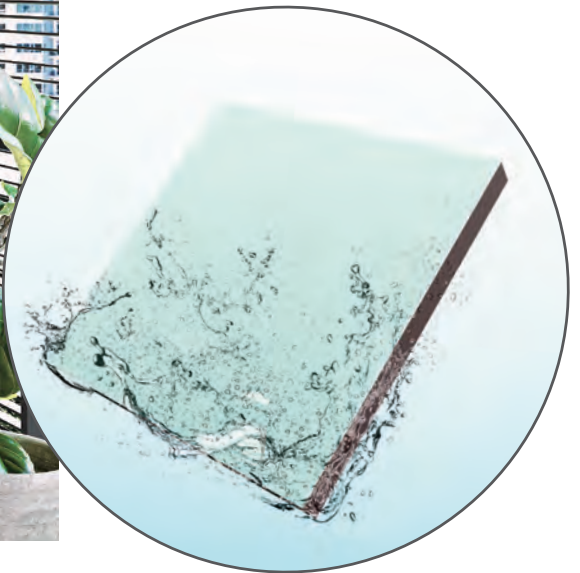
StyleLex[®] Make beautiful covered outdoor cabinetry.



StyleLex is a flexible system to fabricate beautiful cabinetry and kitchen doors for covered outdoor areas.

The unique system is based on an extensive range of surface finishes including matte, woodgrain and textured finishes.

- ▶ Double sided
- ▶ 100% waterproof
- ▶ Range of colours and finishes
- ▶ High scratch and impact resistant
- ▶ Matching Edgeband
- ▶ MPP Carcass available



Above and Cover: Stone covered outdoor kitchens from the StyleLex Matte range.



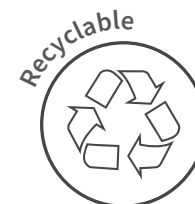
Above: Light grey MPP Carcass structure formed using the StyleLex MPP Carcass range .



Above: The StyleLex MPP Carcass range is available in white, light and dark grey.



Above: After the MPP Carcass structure is formed, this outdoor kitchen is then completed using stone panels and doors





Above: Wool outdoor kitchen from the StyleLex range.

Solid Colour Range



Wool - Matte



Storm - Matte



Stone - Matte

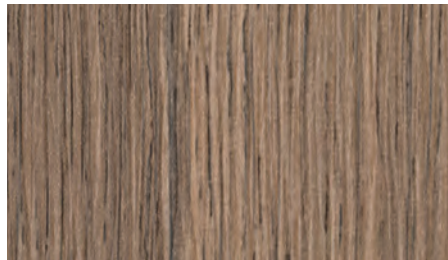
Wood Colour Range



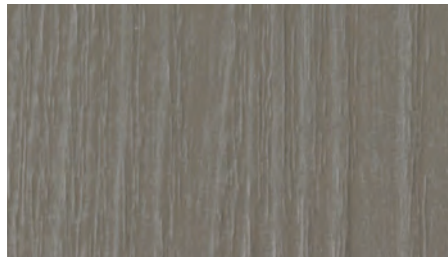
Aspen Wood



Southern Oak

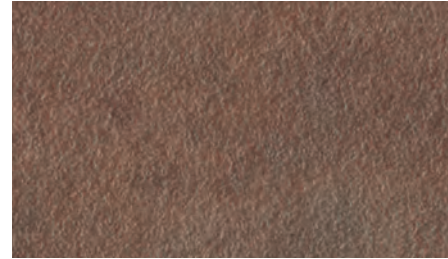


Honey Oak



Tanned Wood

Textured Colour Range



Oxide

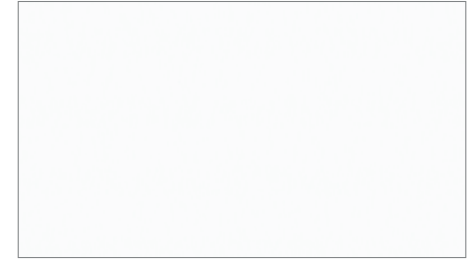


Urban Crete



Stoney Crete

MPP Carcass Colour Range



White



Light Grey



Dark Grey

Due to the nature of the printing process, the colours and images depicted throughout this brochure may vary compared to the actual finished products' colour. Images and colours are to be used as a guide only.

“StyleLex is a versatile cabinet panel solution system for your covered outdoor entertaining space”

Technical Guide

Design Guidelines

StyleLex panels are designed for indoor or covered outdoor use for cabinets and joinery. StyleLex is not designed for structural applications or external wall cladding.

For outdoor use they must be positioned in an opaque covered outdoor area with a minimum of 1.5m overhang on all sides. The StyleLex panels should not be exposed to more than 4 hours of direct sunlight per 24 hour period.

Highly exposed gable or plant on ends are not recommended, we suggest bench top finishes be used to finish cabinet ends in those circumstances.

StyleLex panels are combustible and should not be used directly adjacent to gas cooktops or barbeques. Typically a 200 mm clearance will be required from the perimeter of the burner to the StyleLex panel. Designers should always consult the relevant gas and fire protection codes in your region.

Stylelex should never be immersed in water or directly exposed to water events such as rain or washing directly with a hose.

Fabrication Guidelines

StyleLex panels can be fabricated using conventional decorative panel woodworking equipment.

Edge band performance will be best using PUR adhesive technology. All StyleLex panels should be edged on the whole perimeter to achieve maximum durability.

StyleLex panels can be drilled, screwed and glued using the same techniques as other wood core panels.

StyleLex panels should not be slid on each other or on machinery during the fabrication, always lift the panels as required.

Fixing Guidelines

- ▶ Load bearing shelves max of 600mm spacing
- ▶ Hinges max of 300mm spacing
- ▶ Drawer fronts max of 200mm spacing
- ▶ End panels max of 200mm spacing

Care and Maintenance

StyleLex surfaces should be cleaned with a clean, damp microfiber cloth and warm soapy water.

For grease or more stubborn marks, mild household cleaners can be used.

Guaranteed Quality

All StyleLex panels are laminated by EGR using our premier polyurethane (PUR) reactive hot melt bonding system.

EGR's facilities have been recognised for achieving ISO9001 Quality Management certification for their consistent performance and integrated quality assurance systems.

Specifications

	Face	MPP Carcass
Panel size	2440 x 1220 x 17 mm	2440 x 1220 x 17 mm Nominal
Density	700 kg/m ³	600 kg/m ³
Weight	12 kg/m ²	10 kg/m ²
Resistance to staining	High	Moderate to High
Chemical resistance	High	Moderate to High
Environmental	E1	H4
Layers	13	3

MPP Carcass Panel

StyleLex MPP Carcass panels are engineered for high humidity and high heat environments. The panels will not swell, warp or delaminate under normal residential cabinet conditions.

MPP Carcass panels feature a textured surface which is easy to fabricate, clean and maintain.

MPP Carcass panels can be used for kicks and base frames.

MPP Carcass panels should be edged on the whole perimeter to achieve maximum durability.

Use conventional ABS edge tape with a light textured finish and best colour match for these panels.



Above: Honey Oak covered outdoor kitchen from the StyleLex range.



Above: Southern Oak covered outdoor kitchen from the StyleLex Woodgrain range.

EGR Decor

Redefining Decorative Solutions

Drawing on a rich and diverse 49-year heritage in the design, manufacture, and marketing of leading-edge products for Australian and international markets, EGR Decor offers designers, fabricators and homeowners a stunning collection of wall and cabinet materials.

EGR
DECOR



MADE IN AUSTRALIA



PROUDLY DISTRIBUTED BY:

EGR Decor



📍 45 Machinery St, Darra, Brisbane
Queensland 4076, Australia

🌐 www.egrdecor.com.au

✉ info@egrdecor.com.au

📞 1800 347 347



1. EGR expressly disclaims any representations or warranties of any kind, whether express or implied, as to the accuracy, currency, completeness and/or the merchantability or fitness for a particular purpose of any information contained in or provided via this documentation and/or any service or product described or promoted in this document. 2. It is the customer's responsibility to thoroughly examine the product using a qualified person, to determine whether it is suitable for the application it was purchased for. 3. The receiver of our products is fully responsible to check and to take into account possible third party's patent rights, as well as the existing laws in the country of installation prior to installing our product. 4. No liability may be derived from these images or statements nor from our free technical advice. 5. EGR reserves the right to change, add or remove colours or product without notice. 6. EGR Decor and EGR are registered trademarks. 7. Images and colours should be used as a guide only. 8. 10 Year Indoor Warranty: The EGR Decor warranties cover faulty materials for the periods specified on the relevant product warranty documents. The EGR Decor warranties commence from the date of sale by EGR, they are not transferable and are subject to the terms, conditions and exclusions contained within those warranties.

© Copyright 2022 / Patent Pending Oakmoore Pty Ltd trading as EGR. 191-060218 V30 010222